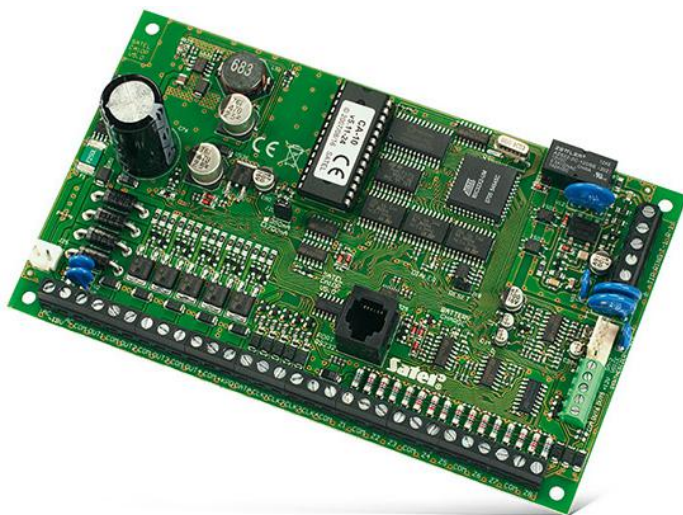


# CA-10 P

## INTRUDER ALARM CONTROL PANEL

The **CA-10** control panel is designed for security of small facilities which do not require future expansion options of the system. The control panel can cooperate with external GSM/GPRS communication modules.

- up to 16 zones
  - support for NC, NO, EOL, 2EOL/NC and 2EOL/NO loop configurations
  - flexible selection of zone function
  - detector diagnostic tools
- 6 programmable outputs
- 4 partitions
- RS-232 port (RJ type socket)
- system operation
  - LCD and LED keypads
  - remote operation by telephone (with optional **MST-1** module)
- system programming
  - local (LCD/LED keypad, PC connected to RS-232 port)
  - remote (PC communicating via modem)
- system codes
  - up to 4 master user codes (1 code per partition)
  - up to 28 user codes (max 12 per partition)
  - 1 service code
- 4 timers
- event log with 255 entries
- event printing feature
- monitoring using ContactID and other protocols
  - 2 monitoring stations numbers
- messaging
  - 8 telephone numbers
  - 1 voice message
  - 4 text messages
- incoming call answering
- advanced telephone tone analysis:
  - TBR-21 compliant tone detection
  - intelligent redial attempts
  - programmable dialing sequence
- built-in 300 bps modem
- autodiagnostic features for basic system components
- on-board switching mode power supply



### TECHNICAL DATA

Control panels	12 V DC
Low current programmable outputs rating	50 mA
High current programmable outputs rating	2200 mA
Power supply rating	2 A
Board dimensions	173 x 102 mm
Operating temperature range	-10...+55 °C
Main board supply voltage (±15%)	18 V AC, 50-60 Hz

