

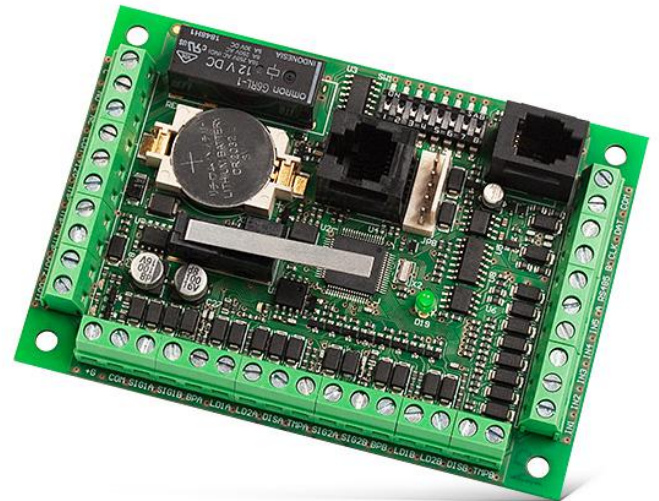
ACCO-KPWG

STANDALONE DOOR CONTROLLER SUPPORTING WIEGAND AND EM MARIN FORMAT READERS

The ACCO-KPWG module is designed for control of a single door within the **ACCO** access control system. The module can also be used as a standalone device. User authorization is based on code or passive transponder (proximity card, tag, etc.). ACCO-KPWG is also compatible with terminals supporting Wiegand and EM Marin protocols, as well as with iButton (Dallas chip) readers.

The device is characterized by a wide range of settings, including the user rights and time schedules for each user, including special holiday schedules. Additionally, event log with more than 24,000 events is available. Non-volatile flash memory ensures security of the module settings in case of power failure. **ACCO-KPWG** is provided with a relay output for operating electromagnetic lock or another door activating device. Owing to additional inputs and outputs, the module can work in conjunction with the alarm system.

Configuration and some functions of ACCO-KPWG might be different due to the system, which the controller is part of. Within the **ACCO** system the module is programmed by means of an LCD keypad or PC computer with **ACCO-SOFT-LT** software installed. The PC can be connected via RS-232 port or via RS-485 bus using **ACCO-USB** converter. In the **ACCO NET** system, the controller configuration is performed using the **ACCO Soft** software.



- support for single door with entry and exit authorization
- support for terminals using the following transmission protocols:
 - EM Marin (SATEL terminals)
 - Wiegand 26
 - Wiegand 32, 34, 36, 40, 42, 56 (controllers firmware version 3.02, release date 2017-11-03 or newer – applies to **ACCO NET** system)
 - Dallas
- standalone or **ACCO/ACCO NET** system operation mode
- 1,024 users
- user rights definition
- access authorization with proximity card and/or code
- biometric authorization
- 256 schedules
- holiday schedules
- non-volatile 24,576 event log
- work time registration event tagging
- anti-passback
- programming means:
 - permanently or temporarily connected LCD keypad
 - PC connected via RS-232 port
 - PC connected via **ACCO-USB** interface to RS-485 bus
- non volatile settings memory
- FLASH based firmware update
- scheduled door locking and unlocking
- programmable limits on number of accesses

Attention!



ACCO-KPWG controller in version:

- **2.03** works with **ACCO-SOFT-LT** software only in version **1.03**
- **3.00** works with **ACCO-SOFT-LT** software in version **1.04** or **1.05**
- **3.01** works with **ACCO-SOFT-LT** software in version **1.05** or **1.07.004**

To cooperate with the **ACCO-NT** access control panel, the controller must be in version **3.00** or newer.

ACCO-KPWG controller in version:

- **3.02** works with **ACCO-NT** access control panel in version **1.12.xxx**
- **3.03** works with **ACCO-NT** access control panel in version **1.13.xxx**
- **3.04** works with **ACCO-NT** access control panel in version **1.14.023**
- **3.05** works with **ACCO-NT** access control panel in version **1.14.026**

TECHNICAL DATA

Environmental class	II
Max. relay switched current	8 A
OC outputs rating	50 mA
Board dimensions	73 x 104 mm
Operating temperature range	-10...+55 °C
Nominal supply voltage (±15%)	12 V DC
Weight	235 g

