

# INT-VMG

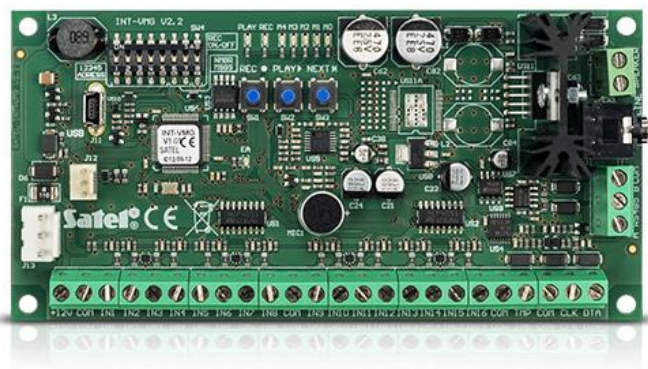
## VOICE MESSAGE MODULE

The **INT-VMG** module is designed for playback of voice messages in the facility, triggered by the control panel. It can be used to provide information and warning messages, as well as to make operation of the alarm system easier e.g. for the elderly or children. In addition, the ability to record any sound enables the module to be used to play back the specific warning sounds. The built-in amplifier allows direct connection of an external speaker, and the line output allows connection to the PA system in the building. Messages are recorded in the device memory using the delivered firmware with the written text to speech conversion feature, so there is no need for lector support when they are being recorded.

### Features:

- ability to record up to 32 messages
- triggering messages with the INTEGRA alarm control panel or other external devices
- built-in amplifier allows direct connection of a loudspeaker
- line output for easy connection to a PA system
- built-in USB port for quick programming with a computer

A **SATEL Virtual Port Driver** must be installed to connect to a **INT-VMG** module.



## TECHNICAL DATA

|   |              |
|---|--------------|
| Supply voltage  | 12 V DC      |
| Board dimensions  | 68 x 140 mm  |
| Operating temperature range   | -10...+55 °C |
| Standby mode current consumption                                    | 75 mA        |
| Max. current consumption  | 500 mA       |
| Weight  | 80 g         |
| Maximum humidity  | 93 ±3%       |
| Environmental class according to EN50130-5                          | II           |
| Maximum power of speaker output                                     | 6 W          |
| Recommended impedance of loudspeaker connected to SPEAKER terminals | 8 Ω          |