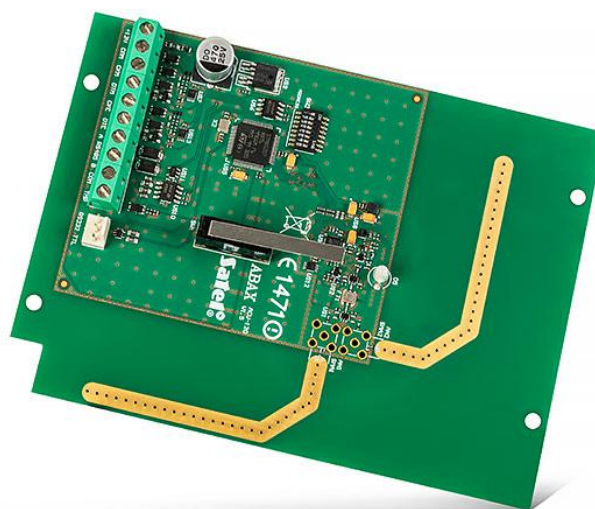


# ACU-120

## ABAX WIRELESS SYSTEM CONTROLLER

The **ACU-120** controller can be used with the control panels of **INTEGRA** and **VERSA** families, allowing expansion of the system by adding wireless devices. It provides two-way communication with confirmation of all transmissions. It also allows the alarm system to be operated by means of wireless keypads as well as remote control keyfobs of the **ABAX** bidirectional system.

The advantage of the **ACU-120** controller is its excellent range – up to 500 m in open area, obtained through the use of an advanced radio system. Depending on the level of the received radio signal, the device will automatically select the optimal antenna that will be used to receive the transmission.



- interfacing with the control panels of **INTEGRA** and **VERSA** families (connection through the communication bus)
- support for up to 48 wireless devices of **ABAX** or **ABAX 2** system (version 5.05 or higher):
  - detectors – **ABAX** system: **AFD-100, AGD-100, AMD-100, AMD-101, AMD-102, AMD-103, APD-100, APMD-150, AOD-200, AOCD-250, ARD-100, ASD-110, ASD-150, ATD-100, AVD-100**
  - detectors – **ABAX 2** system: **APD-200, APD-200 Pet, APMD-250, AOD-210, AOCD-260, AXD-200, AGD-200, ASD-200, ASD-250**
  - sirens – **ABAX** system: **ASP-100 R, ASP-105 R, ASP-205 R**
  - sirens – **ABAX 2** system: **ASP-200 R, ASP-215 R**
  - other – **ABAX** system: **ACX-200, ACX-201, ARF-100, ARU-100, ASW-100 E / ASW-100 F**
  - other – **ABAX 2** system: **ACX-210, ACX-220, ASW-210**
- support for wireless keypads:
  - **INT-KWRL, INT-KWRL2** (up to 4 keypads)
  - **VERSA-LCDM-WRL, VERSA-KWRL2** (up to 6 keypads)
- support for up to 248 keyfobs (depending on the control panel): **APT-100, APT-200**
- two-way encrypted radio communication in the 868 MHz frequency band
- up-to-date radio system
- diversification of antennas
- programming the controller via the control panel by using:
  - keypad in the service mode
  - **DLOADX** program
- RS-232 TTL port to connect a computer, which makes controller firmware update without having to dismantle the controller possible, as well as diagnostics from the **DLOAD10** program
- tamper switch responding to the enclosure opening
- tamper input

### TECHNICAL DATA

Supply voltage	12 V DC
Enclosure dimensions	126 x 158 x 32 mm
Board dimensions	103 x 139 mm
Operating temperature range	-10 °C...+55 °C
Standby mode current consumption	50 mA
Max. current consumption	75 mA
Weight	202 g
Maximum humidity	93±3%
Operating frequency band	868,0 ÷ 868,6 MHz
Radio communication range (in open area)	up to 500 m m
Environmental class according to EN50130-5	II
Complied with standards	EN 50130-4, EN 50130-5, EN 50131-1, EN 50131-3, EN 50131-5-3
Security grade according to EN50131-3	Grade 2

