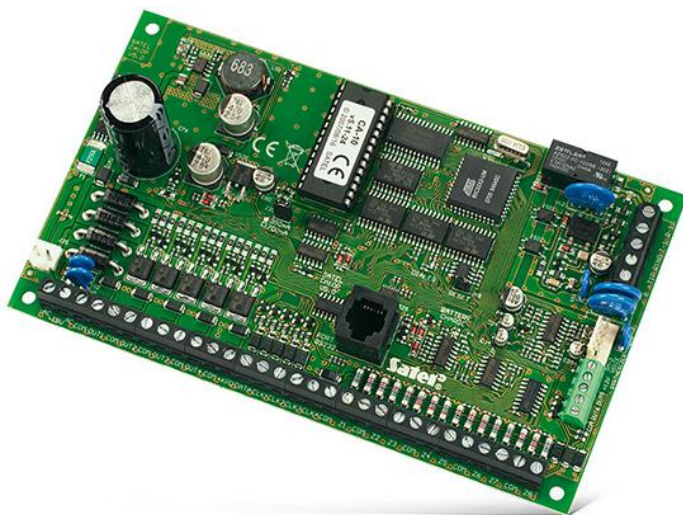


CA-10 P

INTRUDER ALARM CONTROL PANEL

The **CA-10** control panel is designed for security of small facilities which do not require future expansion options of the system. The control panel can cooperate with external GSM/GPRS communication modules.

- up to 16 zones
 - support for NC, NO, EOL, 2EOL/NC and 2EOL/NO loop configurations
 - flexible selection of zone function
 - detector diagnostic tools
- 6 programmable outputs
- 4 partitions
- RS-232 port (RJ type socket)
- system operation
 - LCD and LED keypads
 - remote operation by telephone (with optional **MST-1** module)
- system programming
 - local (LCD/LED keypad, PC connected to RS-232 port)
 - remote (PC communicating via modem)
- system codes
 - up to 4 master user codes (1 code per partition)
 - up to 28 user codes (max 12 per partition)
 - 1 service code
- 4 timers
- event log with 255 entries
- event printing feature
- monitoring using ContactID and other protocols
 - 2 monitoring stations numbers
- messaging
 - 8 telephone numbers
 - 1 voice message
 - 4 text messages
- incoming call answering
- advanced telephone tone analysis:
 - TBR-21 compliant tone detection
 - intelligent redial attempts
 - programmable dialing sequence
- built-in 300 bps modem
- autodiagnostic features for basic system components
- on-board switching mode power supply



TECHNISCHE GEGEVENS

Voedingsspanning alarmsysteem ($\pm 10\%$)	12 V DC
Laagvermogen programmeerbare uitgangsvermogen	50 mA
Hoogvermogen programmeerbare uitgangsvermogen	2200 mA
Voedingsvermogen	2 A
Afmetingen print	173 x 102 mm
Bedrijfstemperatuur	-10...+55 °C
Hoofdprint voedingsvoltage ($\pm 15\%$)	18 V AC, 50-60 Hz

